

Year 1 and 2

Summer 1

Science Focus: Plants

The key vocabulary taught during this half term of History sessions will appear in bold.  
Frequent revisiting of this knowledge will aid fluency in Science.

**Plants**

Pupils should be taught to:

- observe and describe how seeds and bulbs grow into mature plants
- find out and describe how plants need water, light and a suitable temperature to grow and stay healthy



**Seed** - a small object produced by a plant that a new plant can grow from. They are a food store for the plant to use.



**Bulb** - the underground bud or stem of a seed plant dormant stage. Bulbs are also a food store for the plant to use.



**Root** - the part of a plant that grown down into the ground.



**Shoot** - the part of a plant that grows upwards.

**Dormant** - inactive until next growing season.



**Germination** - when seeds begin to grow into plants.



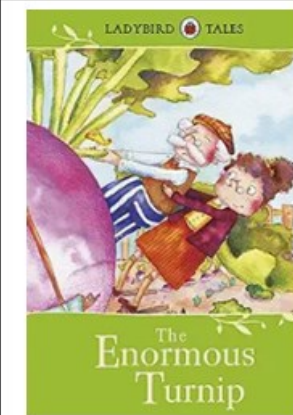
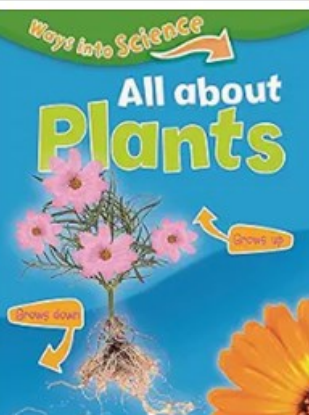
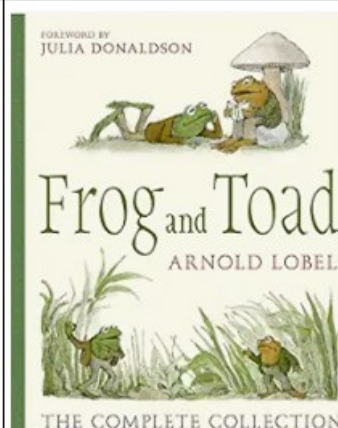
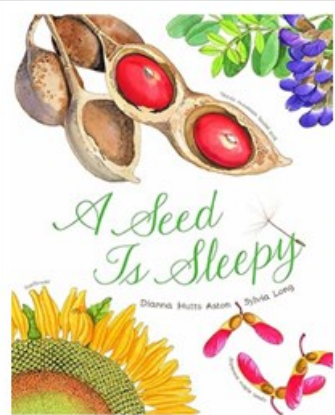
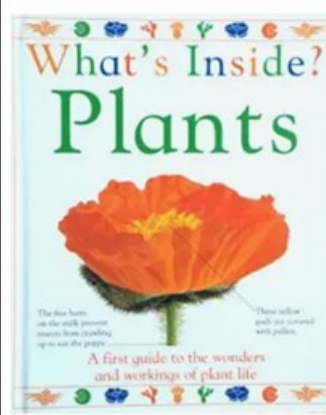
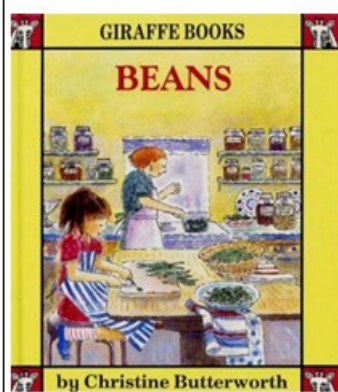
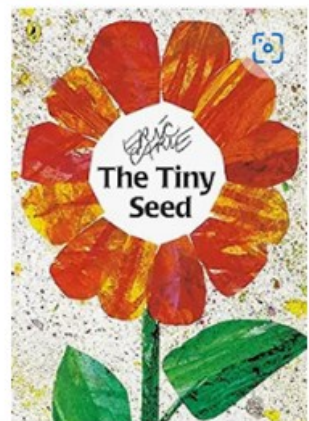
**Perennial** - a plant that regrows every year.



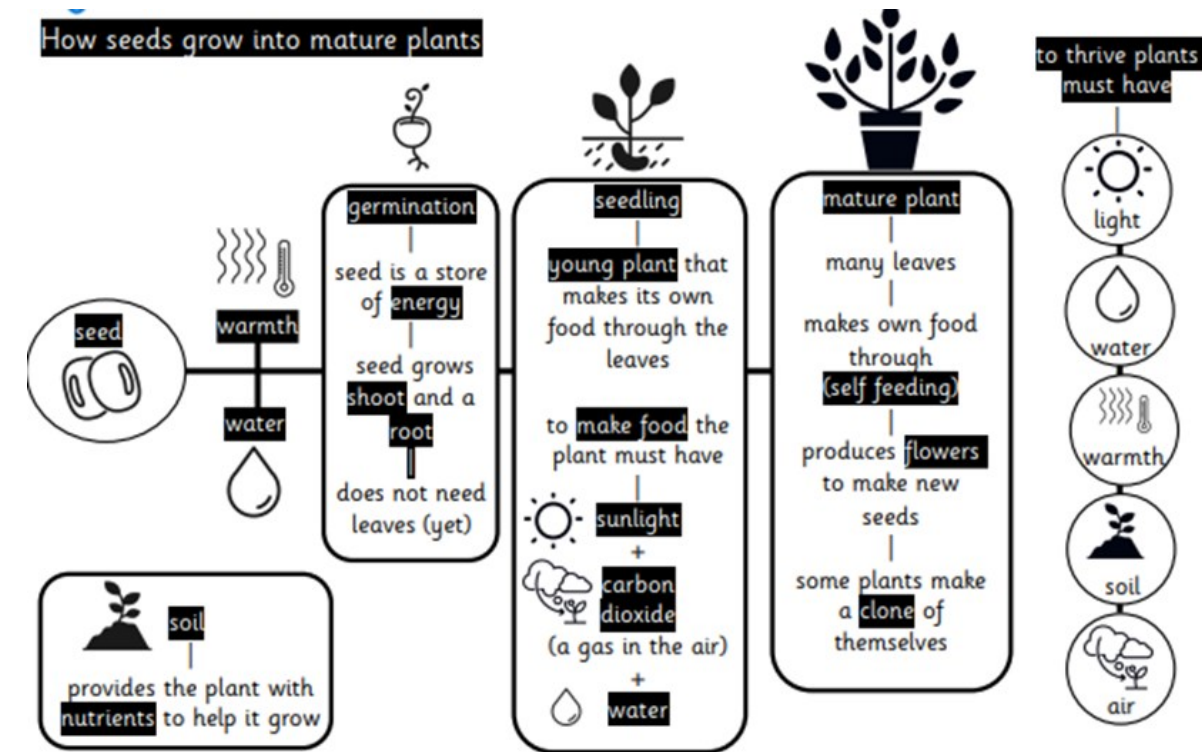
**Nutrients** - substances that support growth.



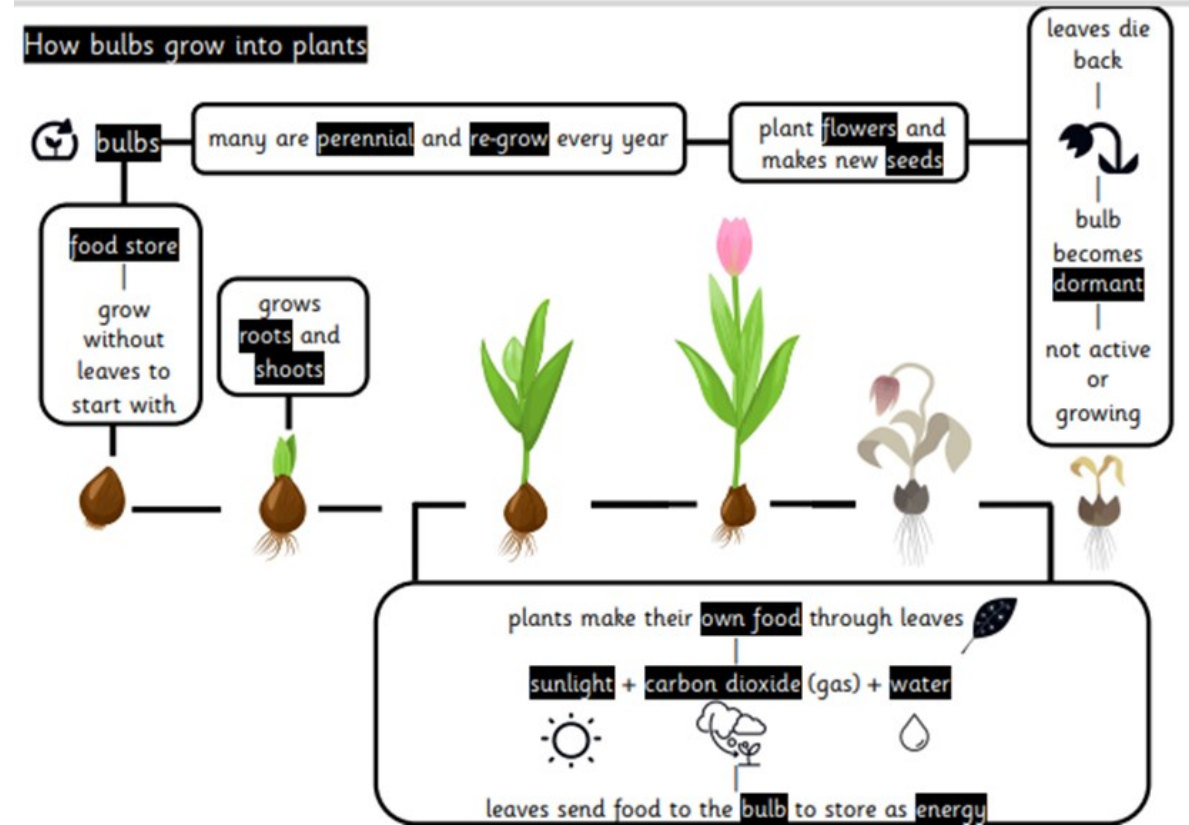
**Books linked to 'Plants'**



**How seeds grow into mature plants**



**How bulbs grow into plants**



**Misconceptions** - learning traps pupils can fall into

✗ Not true	✓ Teach this
A bulb does not grow back.	A bulb is a store of energy that helps the plant to grow back every year.
When a bulb withers and the leaves die back, it is dead.	As the plant sheds its leaves, it sends food energy to the bulb to store for the following year. Then it regrows.
Trees are not plants.	Trees are plants. Trees grow from seeds. They follow the same pattern as other plants, but take a lot longer to mature.