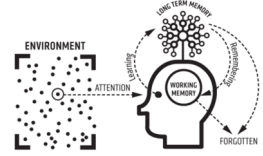




Lanercost C of E Primary School

Science Knowledge Organiser

Biology



Year 3/4

Summer 1

Science Unit

Animals and Humans

The key vocabulary taught during this half term of Science sessions will appear in bold. Frequent revisiting of this knowledge will aid fluency in Science.

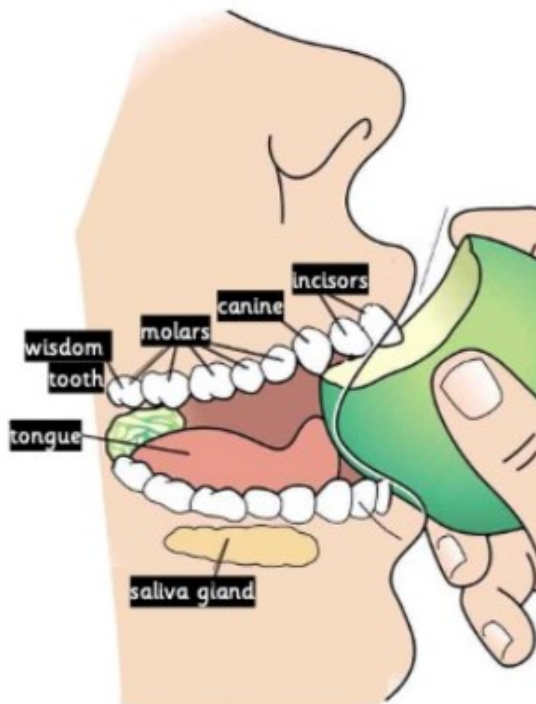
In this unit, we are focusing on:

What types of teeth do humans have?

How does our mouth and teeth help with digestion?

Can teeth tell us what animals eat?

Parts of the **mouth and teeth**



incisor – front chisel-like cutters



canines – grippers and tearers



molars – back crushers and grinders



chew food

tongue
moves food around the mouth so that teeth cut, rip and grind food and **saliva** can start breaking it down
helps us taste different foods



saliva is released to help break up the food. It is a fluid produced in the mouth that contains **enzymes**



enzymes in the saliva start to break down food types, like **carbohydrates** and **fats**



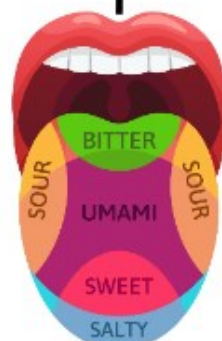
bolus food is turned into small balls of nutrients that are swallowed



saliva also enables us to taste food, keep the mouth clean and helps food slip down



Umami taste of cheese, meat, fish and vegetables

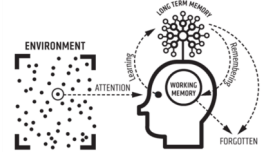




Lanercost C of E Primary School

Science Knowledge Organiser

Biology

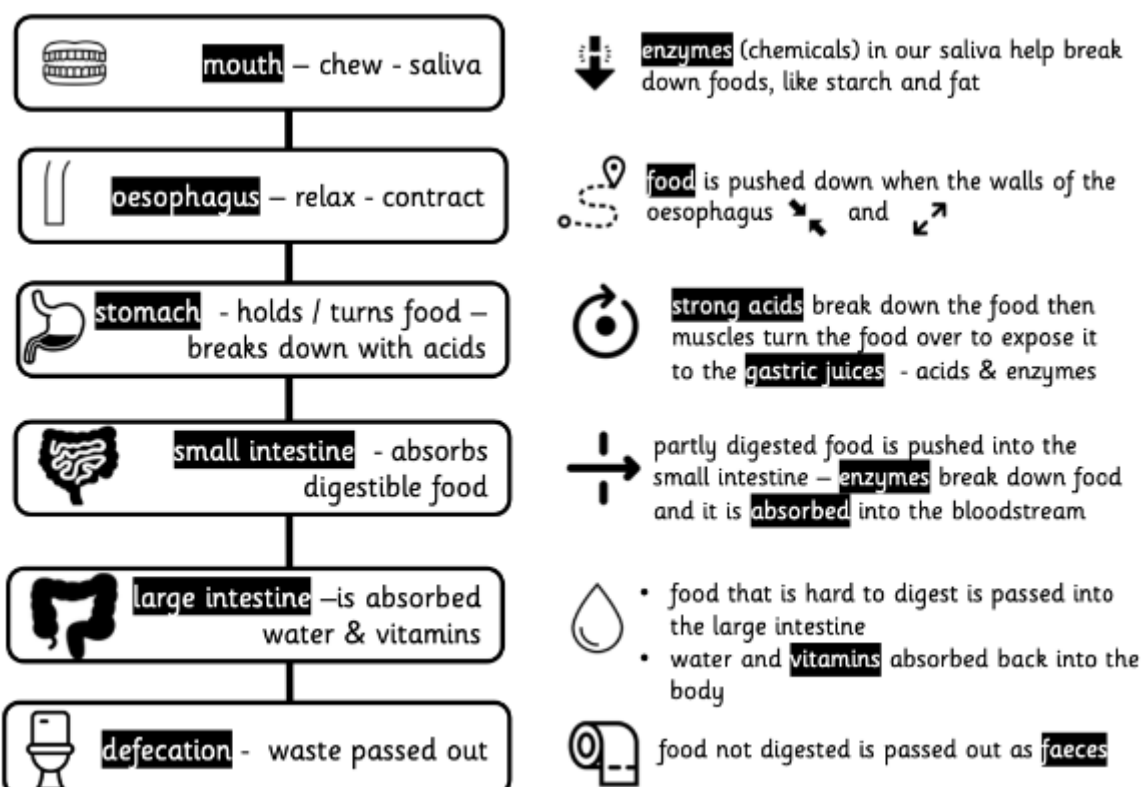
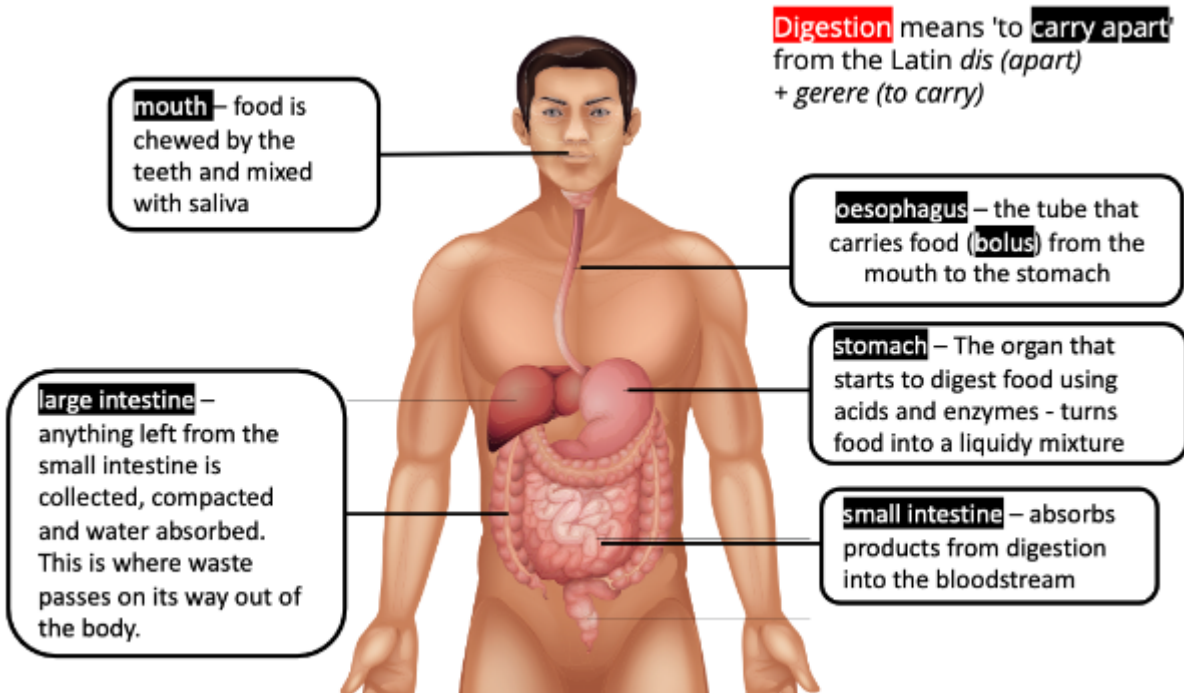


Year 3/4 **Summer 1** **Science Unit** **Animals and Humans**

The key vocabulary taught during this half term of Science sessions will appear in bold. Frequent revisiting of this knowledge will aid fluency in Science.

In this unit, we are focusing on: What are the parts of the digestive system? How does the digestive system work?

Parts of the **digestive system**

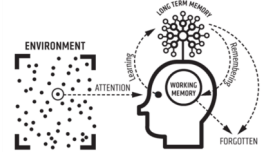




Lanercost C of E Primary School

Science Knowledge Organiser

Biology



Year 3/4

Summer 1

Science Unit

Animals and Humans

The key vocabulary taught during this half term of Science sessions will appear in bold. Frequent revisiting of this knowledge will aid fluency in Science.

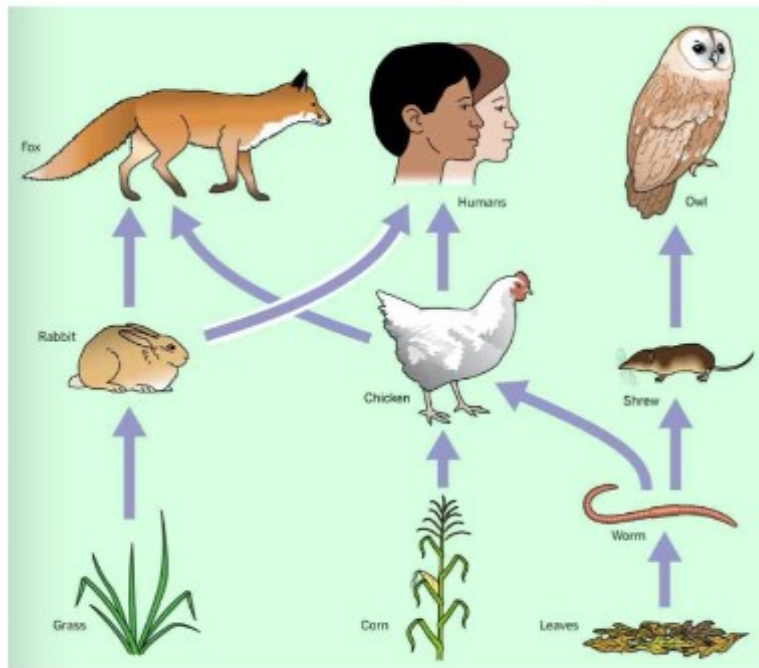
In this unit, we are focusing on:

What are food chains?

How do I construct a food chain?

How are teeth, digestion and food chains connected?

Food chains



- a **food chain** shows the link between living things
- Some animals belong to more than one **food chain**
- the **arrows** show the direction that food energy flows

